



**SANDVIK**  
Coromant

---

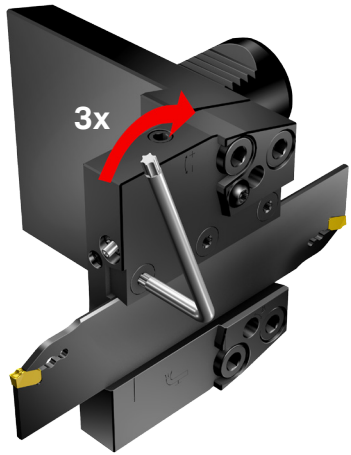
# Toolholders

For CoroCut® QD and QS shanks

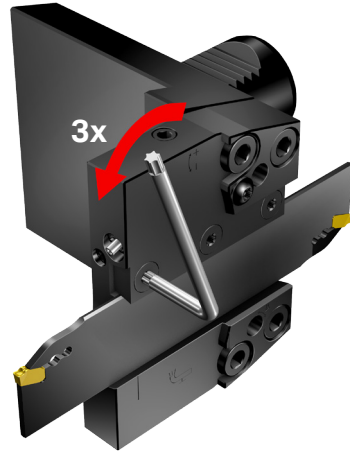
<b>Tool holders - For CoroCut® QD and QS shanks</b>	<b>ENG</b> 4-8
<b>刀座 - 用于CoroCut® QD和QS刀柄</b>	<b>CHI</b> 9-13
<b>Porte-outils - Pour outils à manche CoroCut® QD et QS</b>	<b>FRE</b> 14-18
<b>Werkzeughalter - Für CoroCut® QD und QS-Schäfte</b>	<b>GER</b> 19-23
<b>Portautensili - per CoroCut® QD e steli QS</b>	<b>ITA</b> 24-28
<b>ツールホルダ - コロカットQDおよびQSシャンク用</b>	<b>JPN</b> 29-33
<b>Porta-ferramentas - Para CoroCut® QD e hastes QS</b>	<b>POR</b> 34-38
<b>Инструментальные блоки - Для державок CoroCut® QD и QS</b>	<b>RUS</b> 39-43
<b>Portaherramientas - Para CoroCut® QD y mangos QS</b>	<b>SPA</b> 44-48

# Handling instruction

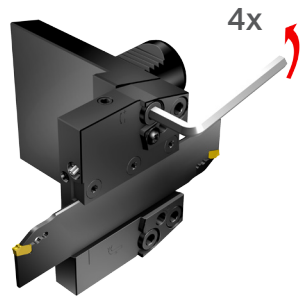
APBR/L-\*



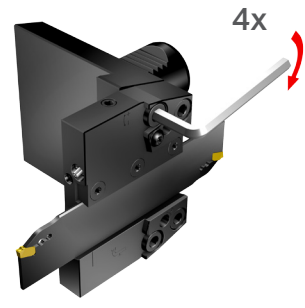
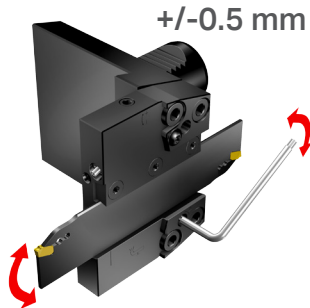
Clamp the parting blade



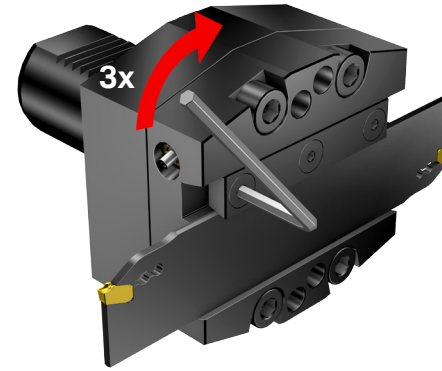
Unclamp the parting blade



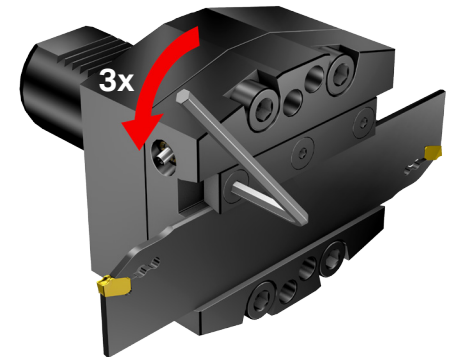
Center height adjustment



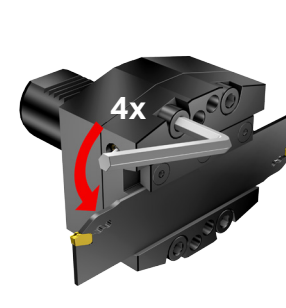
APBA-\*



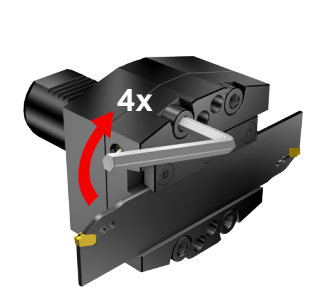
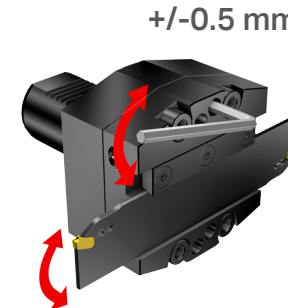
Clamp the blade



Unclamp the blade

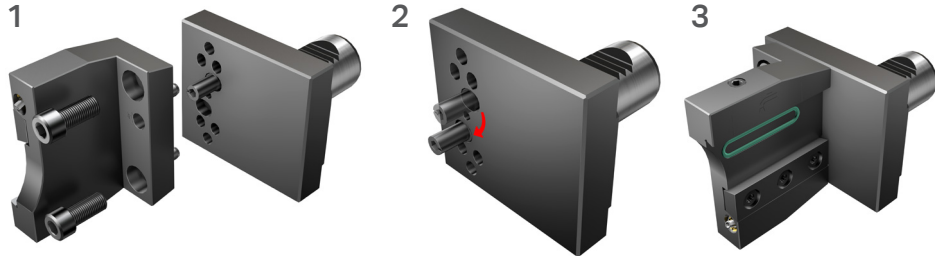


Center height adjustment



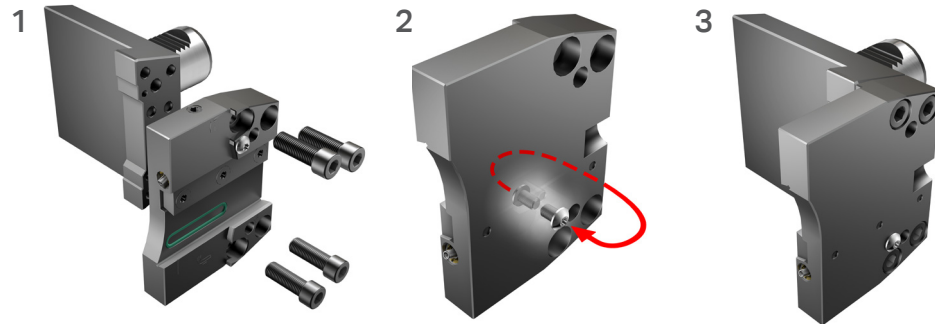
## How to change orientation of plate

Top mounted carrier plate -  
valid for both VDI and bolt on tool holders



1. Remove both screws and the carrier plate
2. Change the eccentric position
3. Mount the carrier plate in the new direction and tight the screws

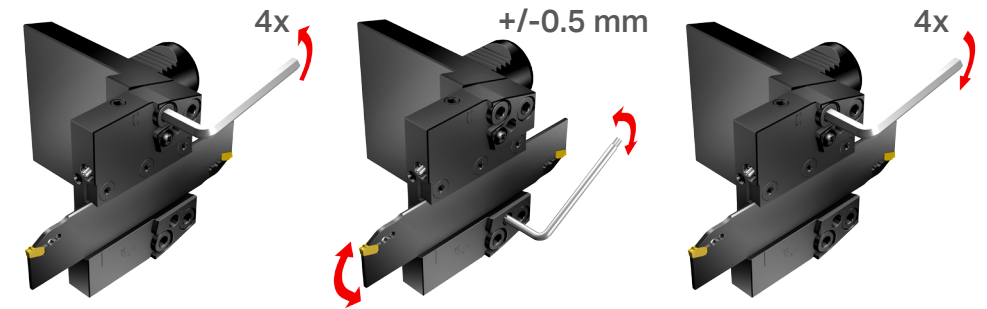
Face mounted carrier plate –  
valid for both VDI and bolt on tool holders



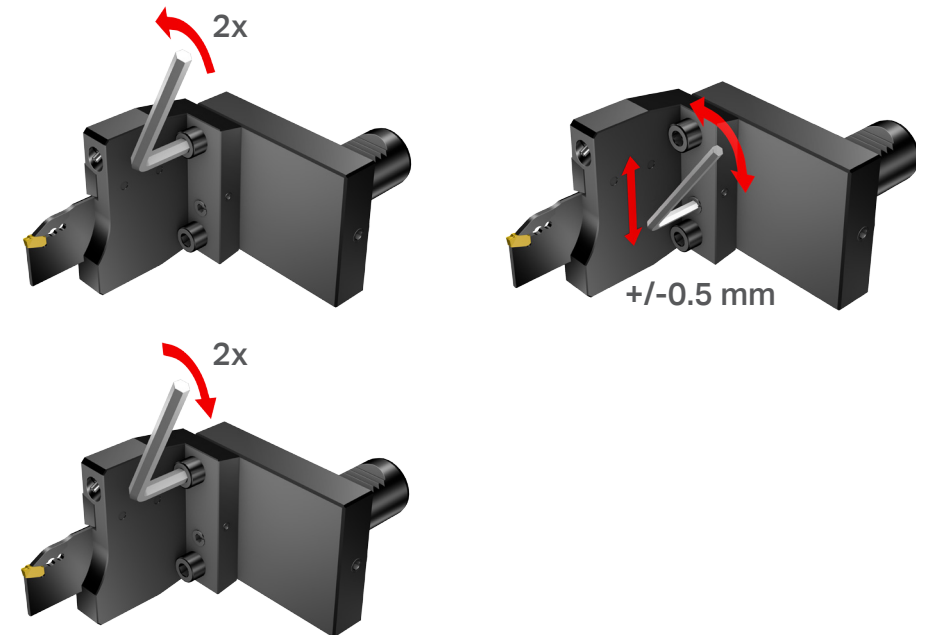
1. Remove the 4 screws and the carrier plate
2. Change the position of the lens head screw to the opposite side of the carrier plate to seal the coolant connection
3. Mount the carrier plate in the new direction and tight the screws

## Center height adjustment

Face mounted carrier plate –  
valid for both VDI and bolt on tool holders

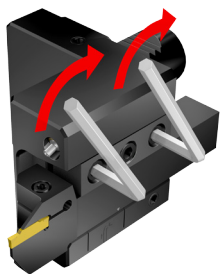
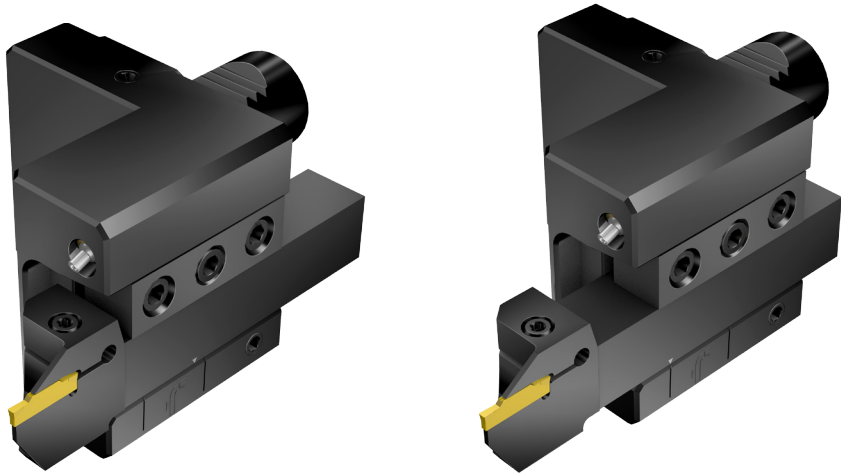


Top mounted carrier plate –  
valid for both VDI and bolt on tool holders

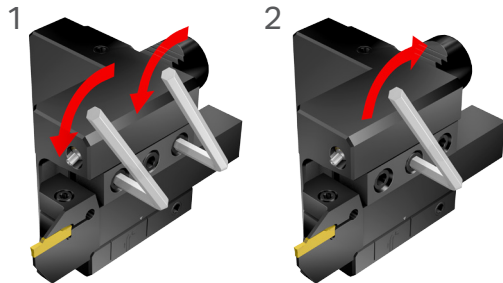


# Handling instruction

ASHR/L-\*



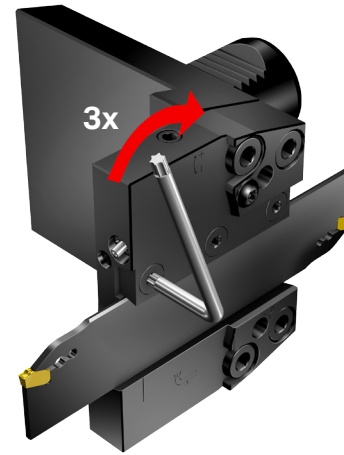
Clamp the shank tool



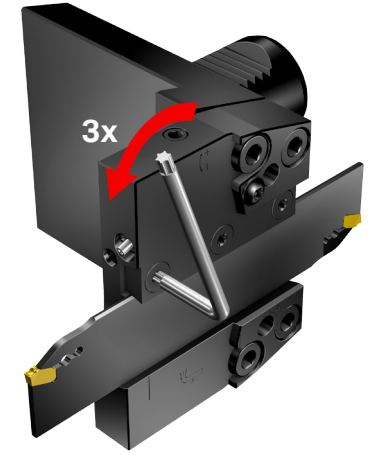
Unclamp the shank tool

# 操作说明

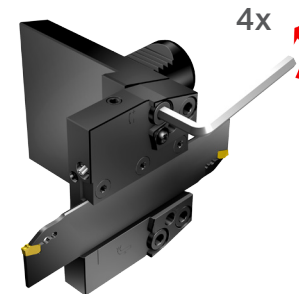
APBR/L-\*



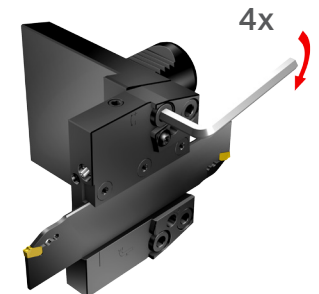
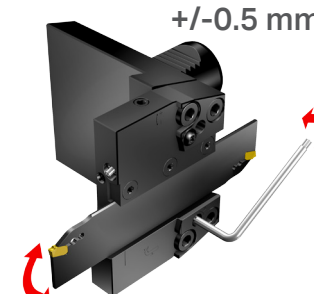
夹紧切断刀板



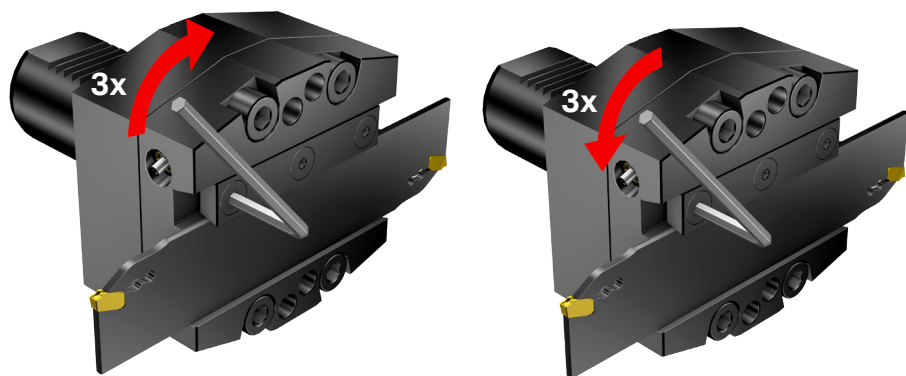
松开切断刀板



中心高调整



APBA-\*



夹紧刀板

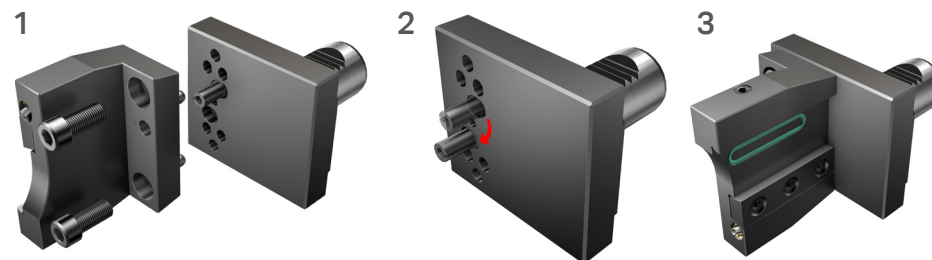
松开刀板



中心高调整

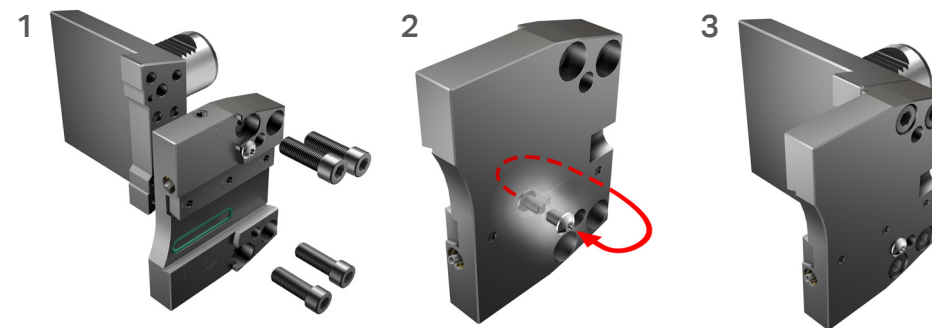
## 如何改变板的方向

顶部安装式刀夹板 -  
对两个VDI均适用，通过螺栓紧固在刀座上



1. 拆下两个螺钉和刀夹板
2. 更改偏心位置
3. 在新的方向安装刀夹板，然后拧紧螺钉

端面安装式刀夹板 -  
对两个VDI均适用，通过螺栓紧固在刀座上



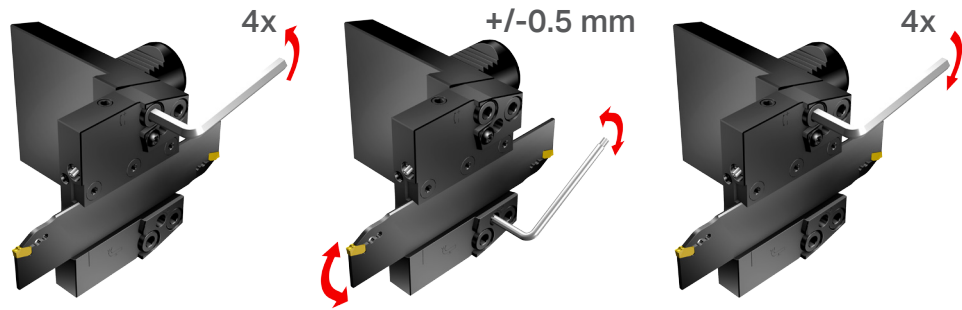
1. 拆下4个螺钉和刀夹板
2. 更改刀夹板对面镜头端部螺钉的位置，以密封冷却液接头
3. 在新的方向安装刀夹板，然后拧紧螺钉



## 中心高调整

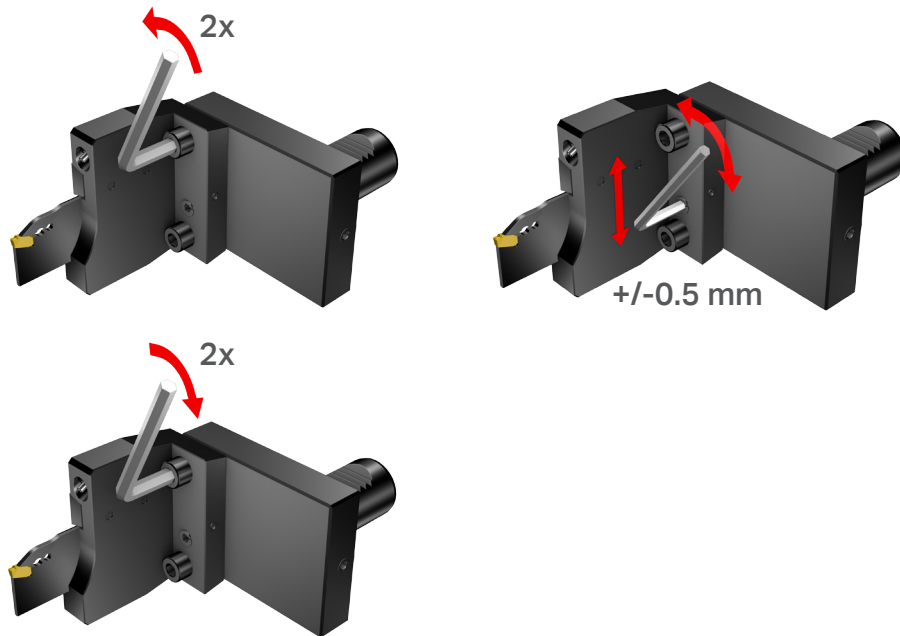
端面安装式刀夹板 -

对两个VDI均适用，通过螺栓紧固在刀座上



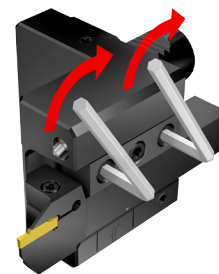
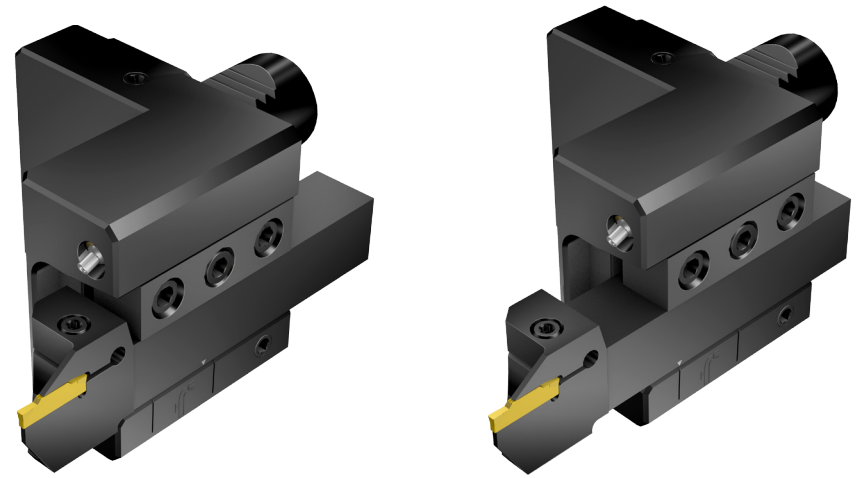
顶部安装式刀夹板 -

对两个VDI均适用，通过螺栓紧固在刀座上

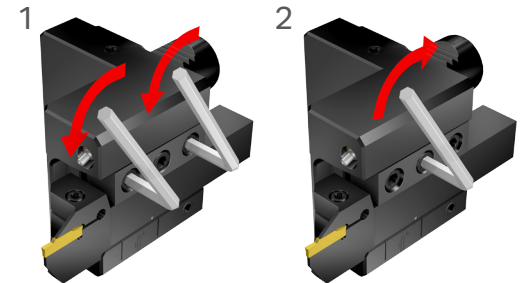


## 操作说明

ASHR/L-\*



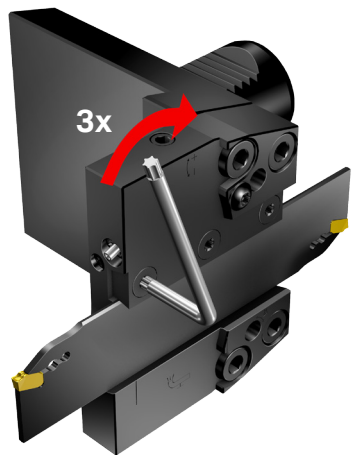
夹紧常规刀柄



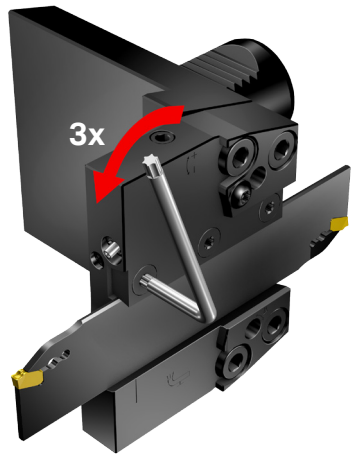
松开常规刀柄

# Instructions d'utilisation

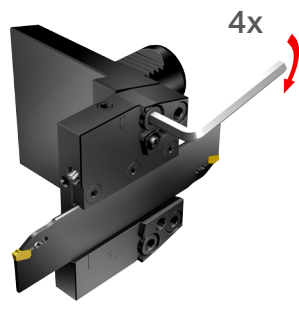
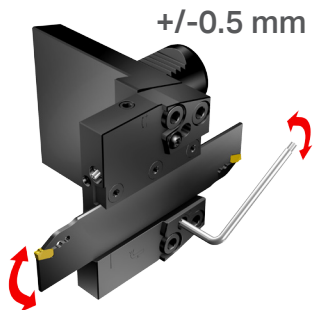
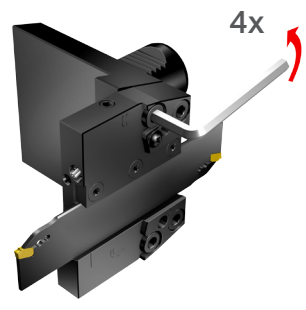
APBR/L-\*



Serrage de la lame de tronçonnage

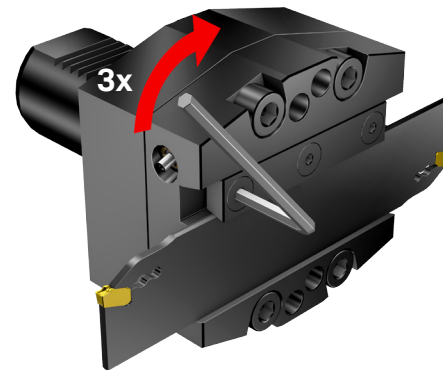


Desserrage de la lame de tronçonnage

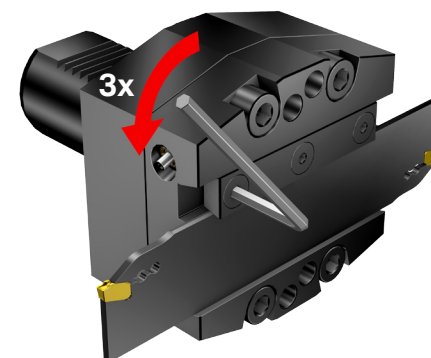


Réglage de la hauteur de centre

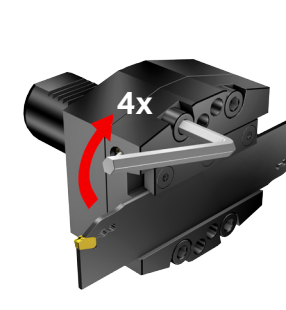
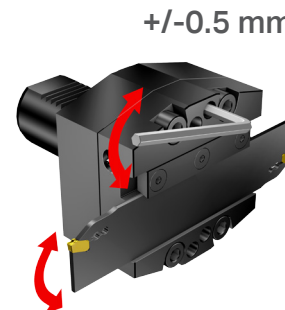
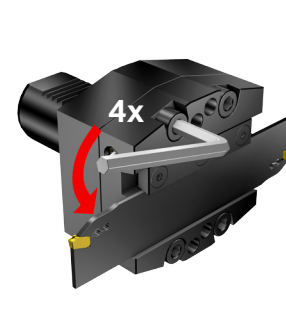
APBA-\*



Serrage de la lame



Desserrage de la lame

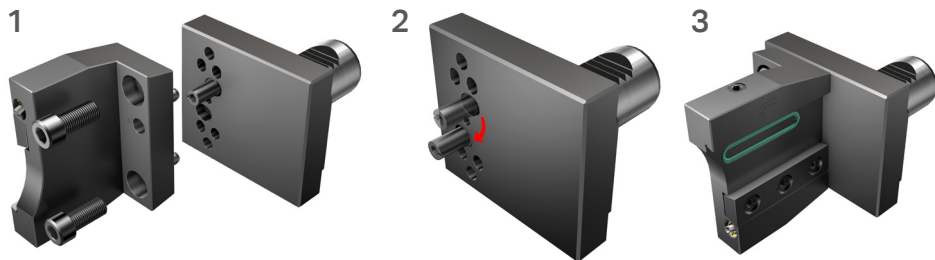


Réglage de la hauteur de centre



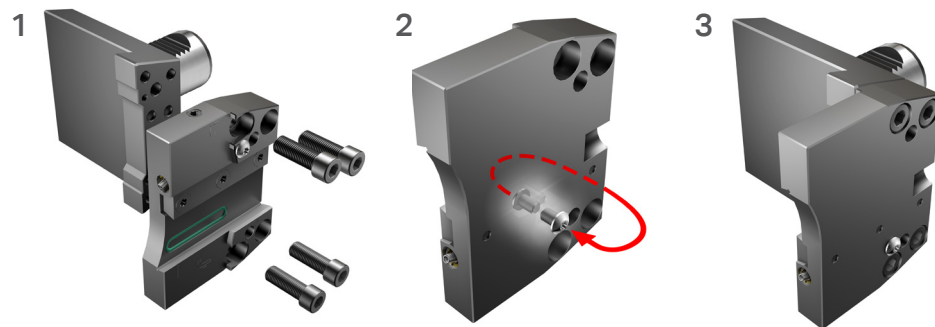
## Changement d'orientation de la plaque

Plaque porte-outil montée sur le dessus -  
pour postes-outils VDI et à boulons



1. Retirer les deux vis et la plaque porte-outil
2. Retourner la plaque
3. Monter la plaque dans sa nouvelle orientation ; serrer les vis

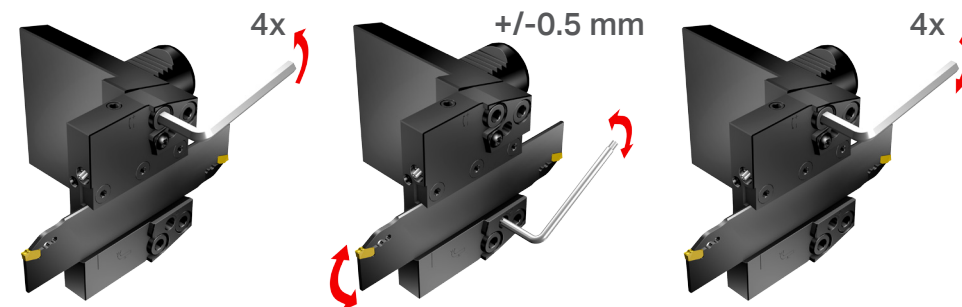
Plaque porte-outil à montage frontal –  
pour postes-outils VDI et à boulons



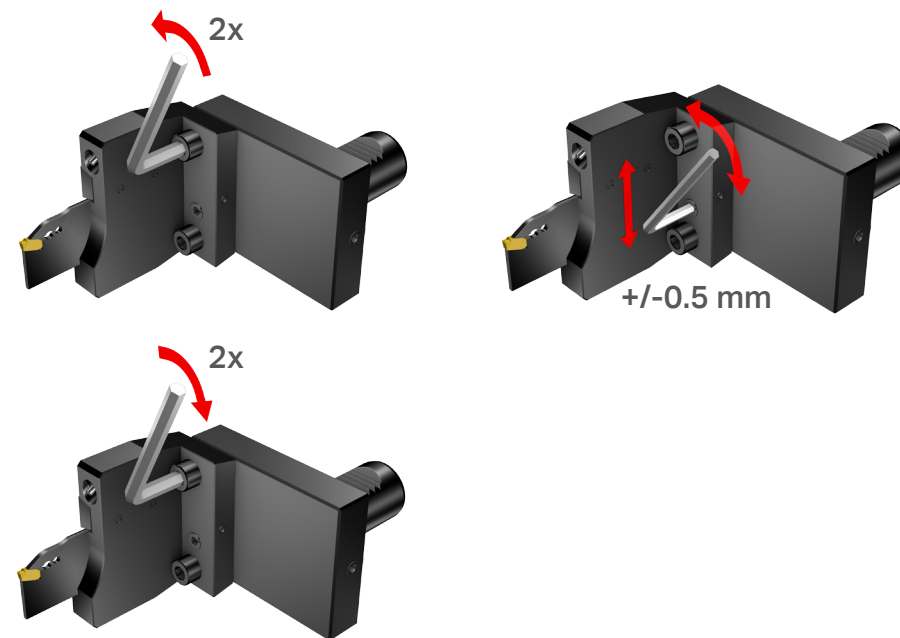
1. Retirer les 4 vis et la plaque porte-outil
2. Retirer la vis à tête bombée qui obture le raccordement à l'arrosage et la remonter de l'autre côté de la plaque
3. Monter la plaque dans sa nouvelle orientation ; serrer les vis

## Réglage de la hauteur de centre

Plaque porte-outil à montage frontal –  
pour postes-outils VDI et à boulons

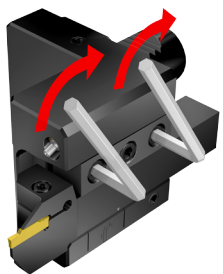
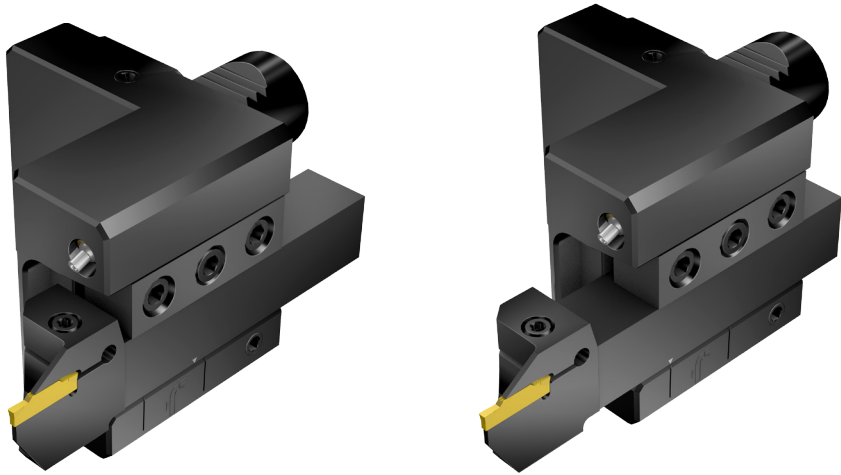


Plaque porte-outil montée sur le dessus –  
pour postes-outils VDI et à boulons

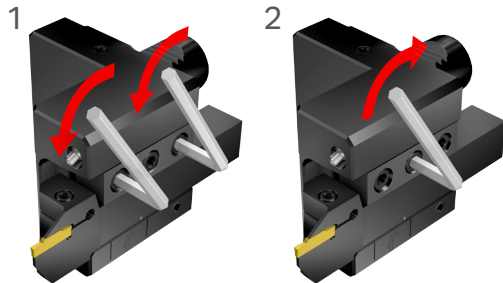


# Instructions d'utilisation

ASHR/L-\*



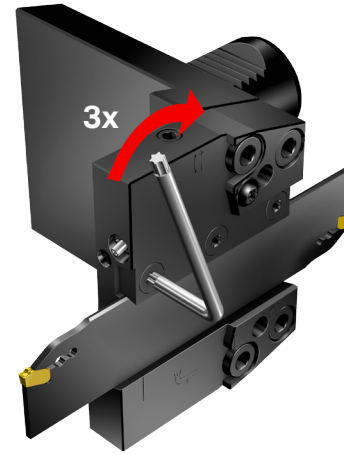
Serrage d'un outil à manche



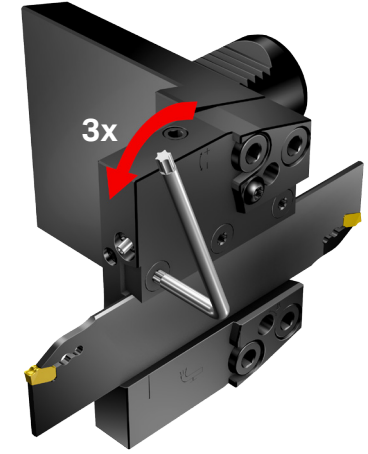
Desserrage d'un outil à manche

# Montageanweisung

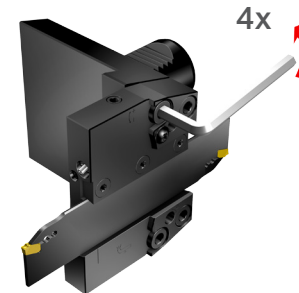
APBR/L-\*



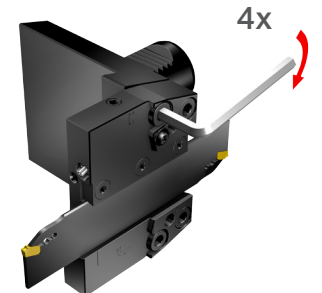
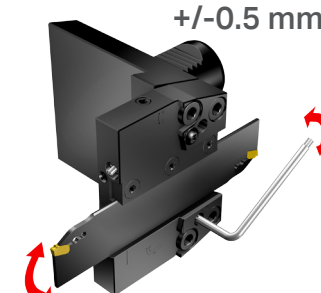
Einsatz zum Abstechen spannen  
(Stechschwert oder Stecheinsatz)



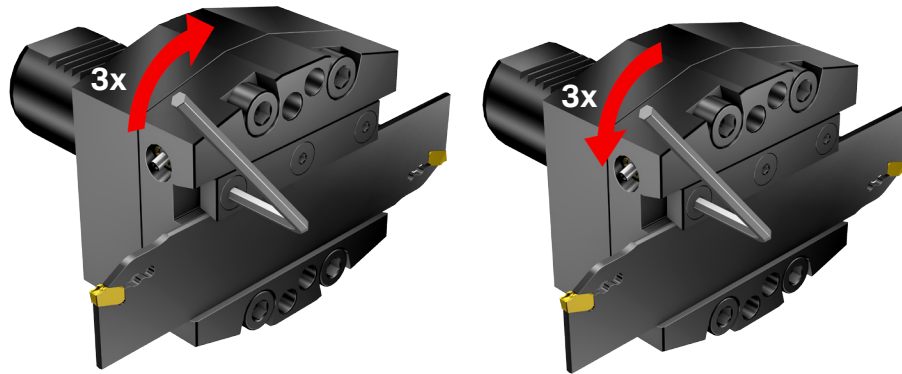
Einsatz zum Abstechen lösen



Einstellen der Mittenhöhe



APBA-\*



Einsatz spannen

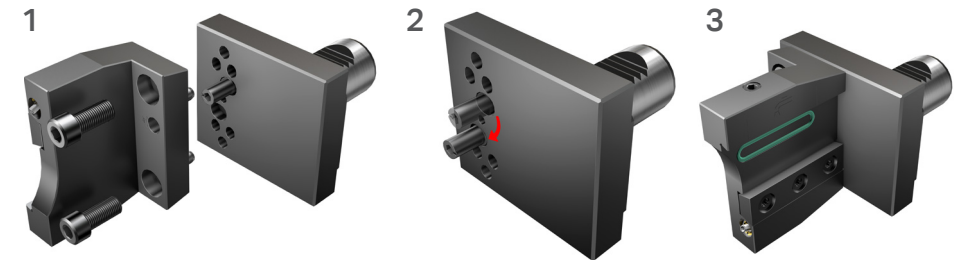
Einsatz lösen



Einstellen der Mittenhöhe

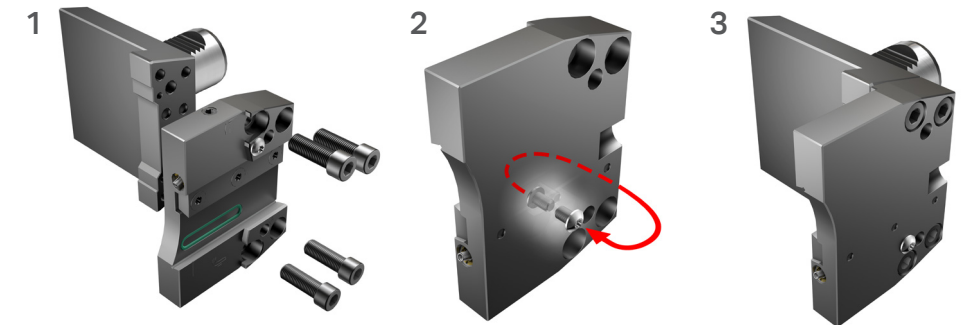
## Wechsel der Trägerplattenposition

Trägerplatte mit Spannfinger -  
gültig für VDI- und Bolt-On-Halter



1. Schrauben und Trägerplatte lösen
2. Außermittige Position ändern
3. Trägerplatte in der neuen Position befestigen und die Schrauben anziehen

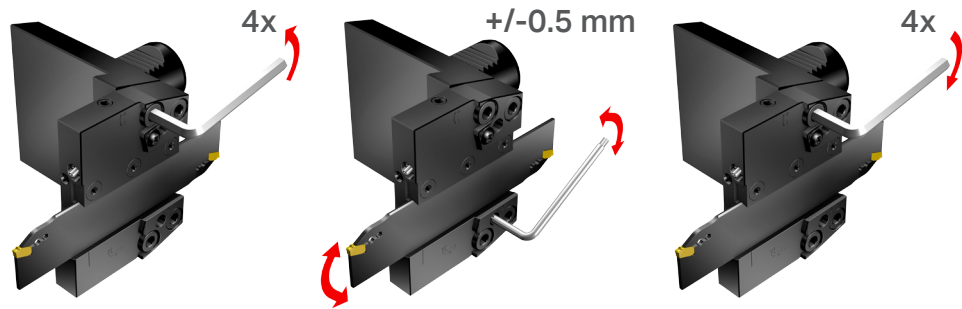
Stirnseitig montierte Trägerplatte –  
gültig für VDI- und Bolt-On-Halter



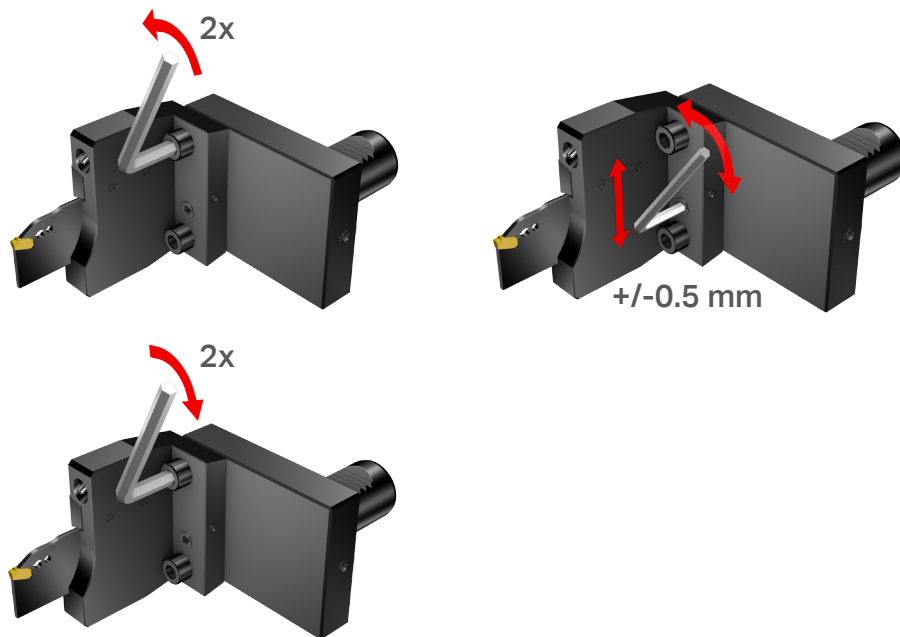
1. Die 4 Schrauben und die Trägerplatte entfernen
2. Linsenkopfschraube auf die gegenüberliegende Seite der Trägerplatte zum Verschließen der KSS-Verbindung einsetzen
3. Trägerplatte in der neuen Richtung befestigen und die Schrauben anziehen

## Einstellen der Mittenhöhe

Stirnseitig montierte Trägerplatte –  
gültig für VDI- und Bolt-On-Halter

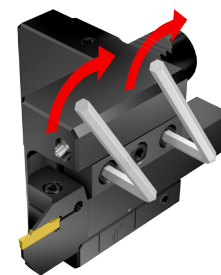
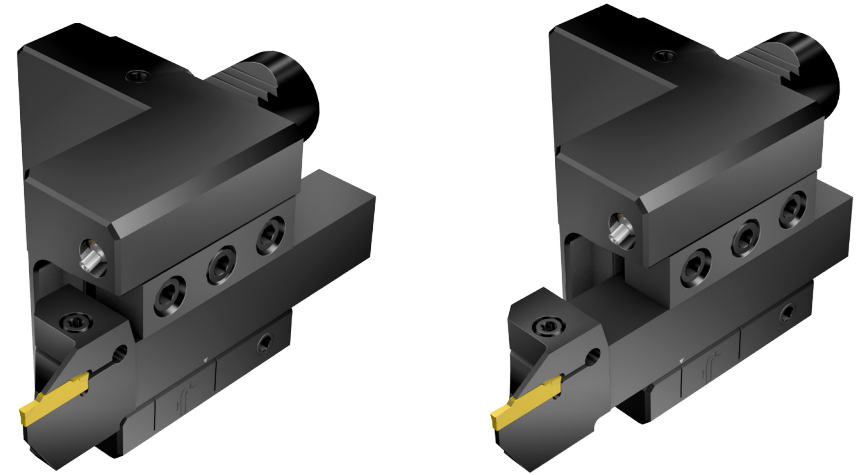


Trägerplatte mit Spannfinger –  
gültig für VDI- und Bolt-On-Halter

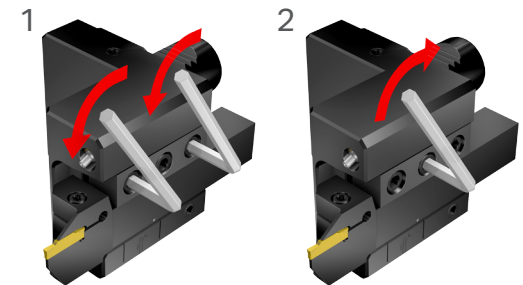


## Montageanweisung

ASHR/L-\*



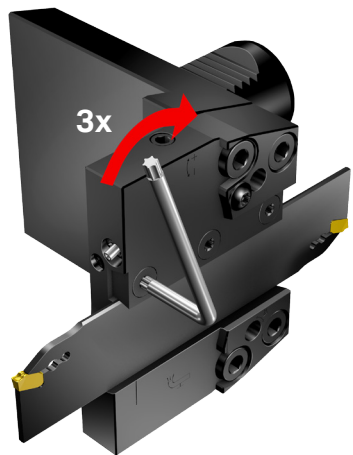
Schaftwerkzeug spannen



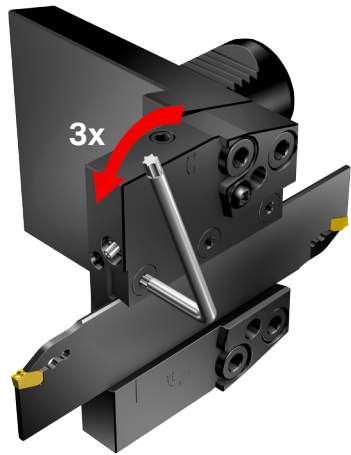
Schaftwerkzeug lösen

# Istruzioni per l'assemblaggio

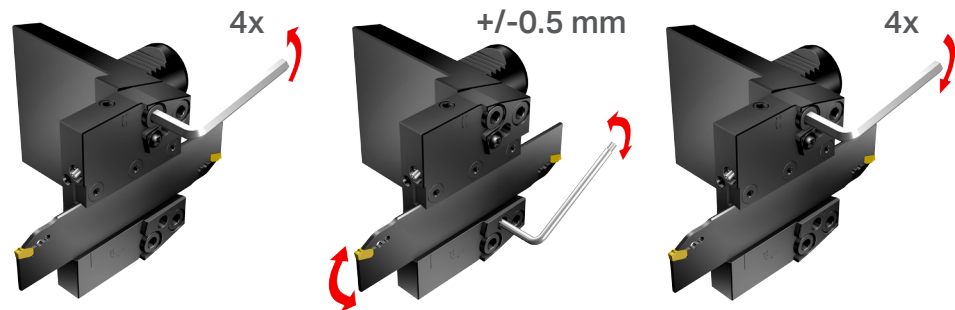
APBR/L-\*



Bloccare la lama di troncatura

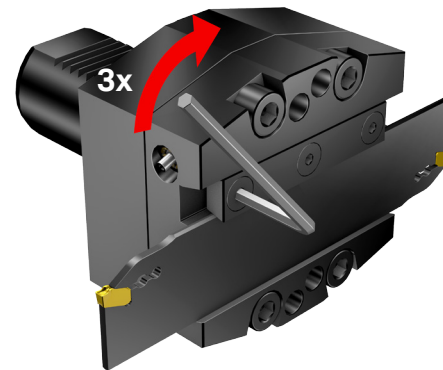


Sbloccare la lama di troncatura

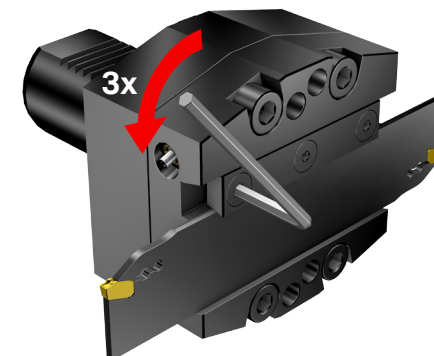


Regolazione altezza centro

APBA-\*



Bloccare la lama



Sbloccare la lama

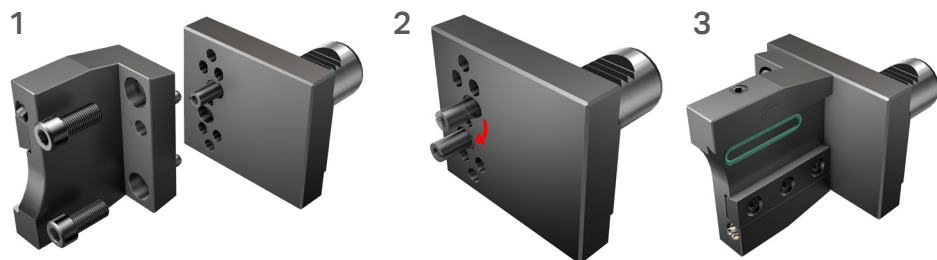


Regolazione altezza centro



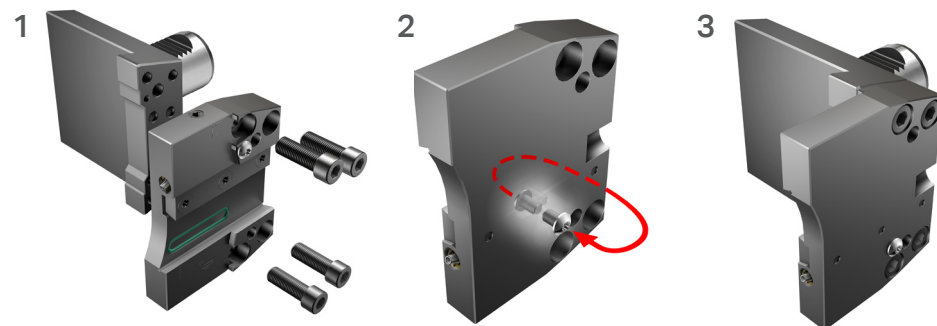
## Come modificare l'orientamento della piastra

Piastra di supporto superiore -  
per portautensili VDI e bullonati



1. Rimuovere entrambe le viti e la piastra di supporto
2. Modificare la posizione eccentrica
3. Montare la piastra di supporto nella nuova direzione e serrare le viti

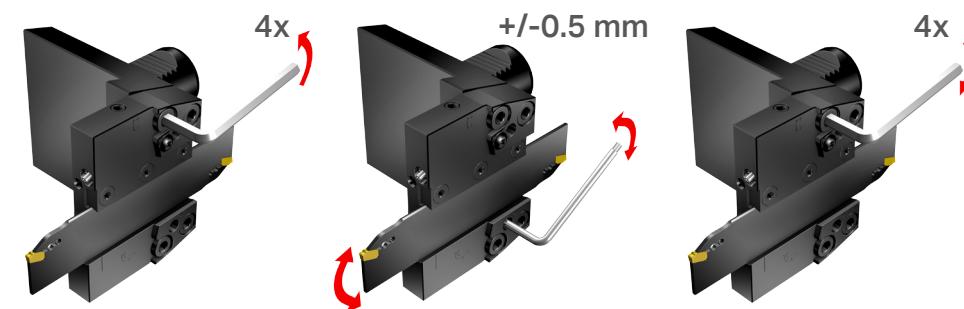
Piastra di supporto frontale -  
per portautensili VDI e bullonati



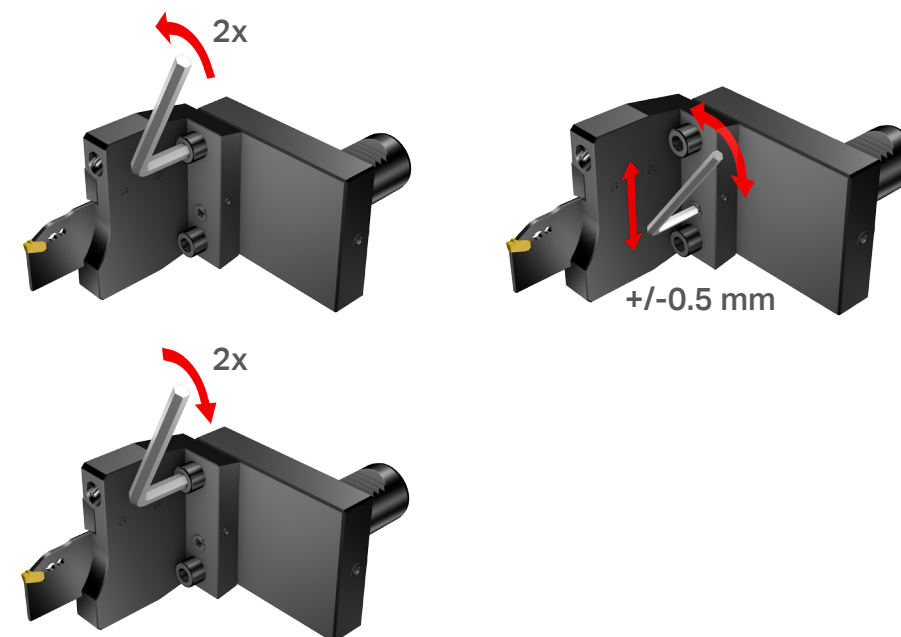
1. Rimuovere le 4 viti e la piastra di supporto
2. Modificare la posizione delle viti a testa lentiforme verso il lato opposto della piastra di supporto per sigillare il collegamento del refrigerante
3. Montare la piastra di supporto nella nuova direzione e serrare le viti

## Regolazione altezza centro

Piastra di supporto frontale -  
per portautensili VDI e bullonati



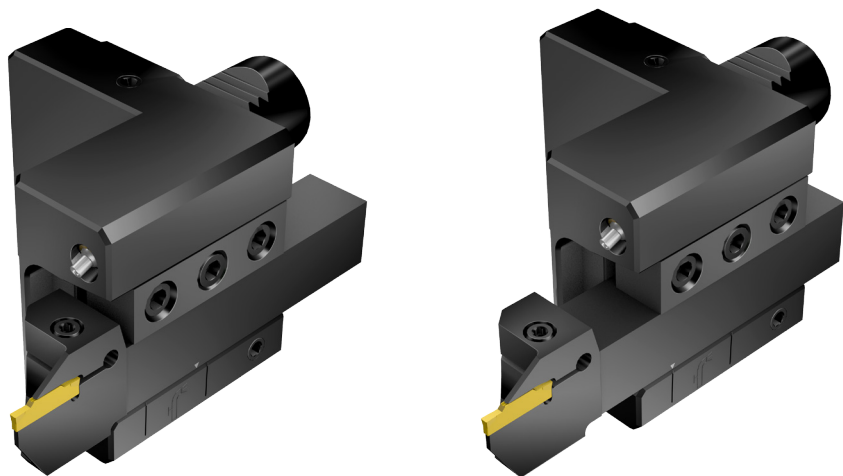
Piastra di supporto superiore -  
per portautensili VDI e bullonati





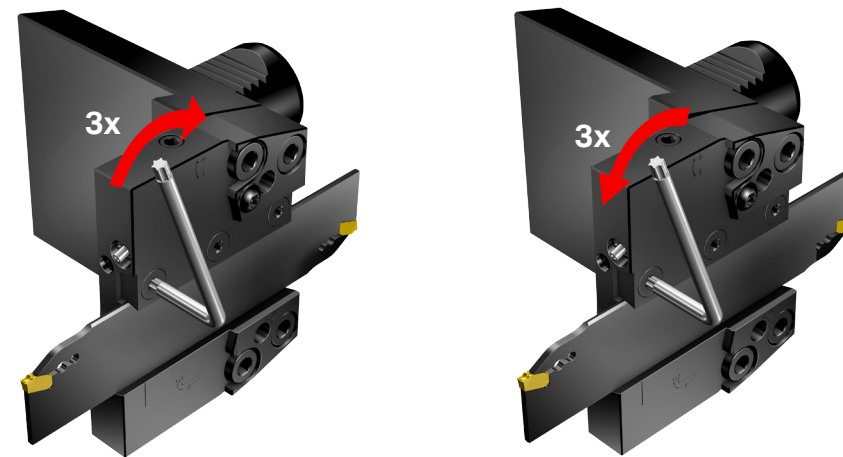
# Istruzioni per l'assemblaggio

ASHR/L-\*



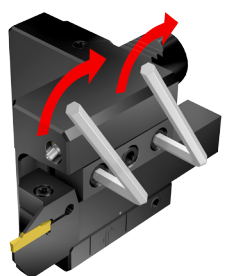
# 取扱要領

APBR/L-\*

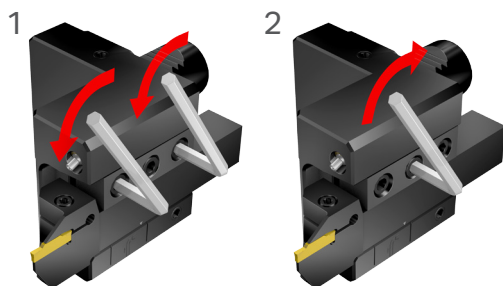


ブレードのクランプ

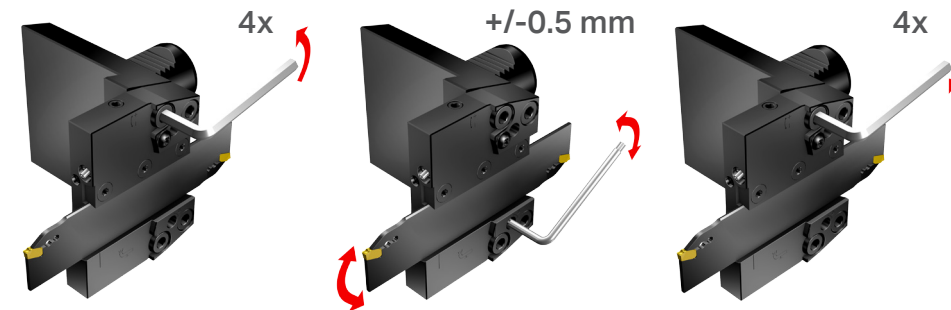
ブレードのアンクランプ



Bloccare l'utensile a stelo

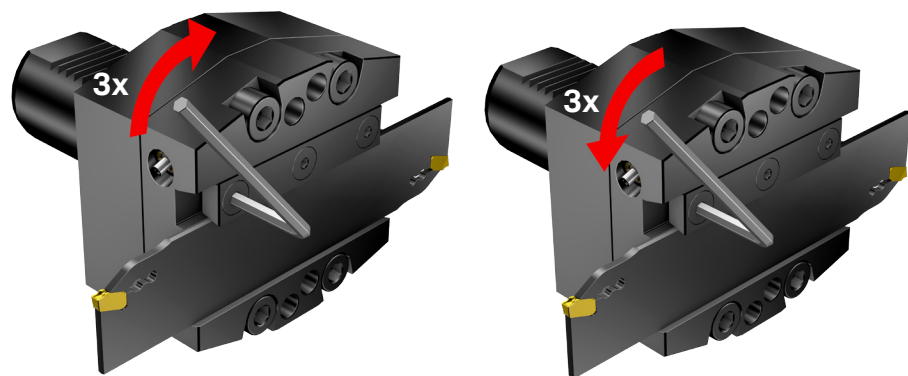


Sbloccare l'utensile a stelo



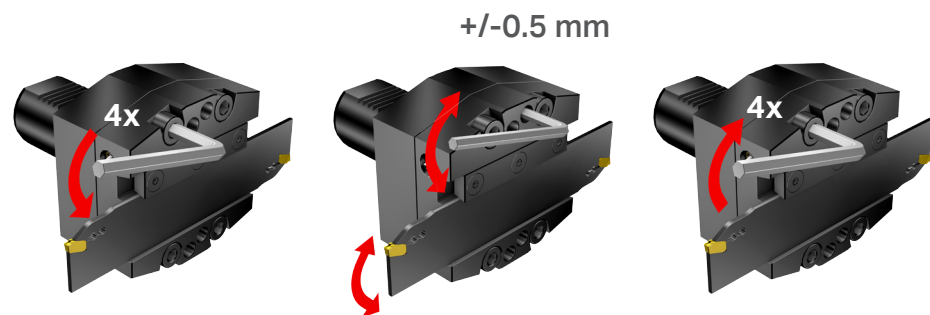
芯高の調整

APBA-\*



ブレードのクランプ

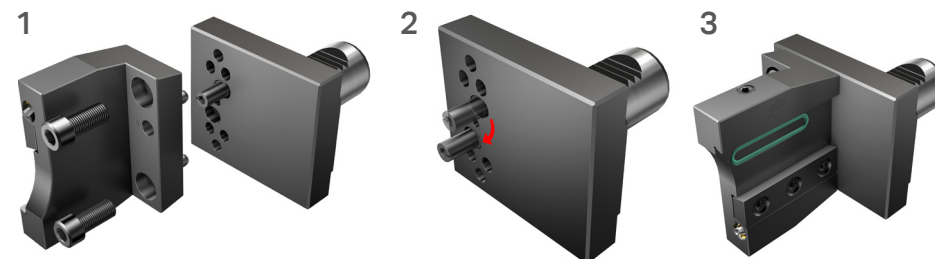
ブレードのアンクランプ



芯高の調整

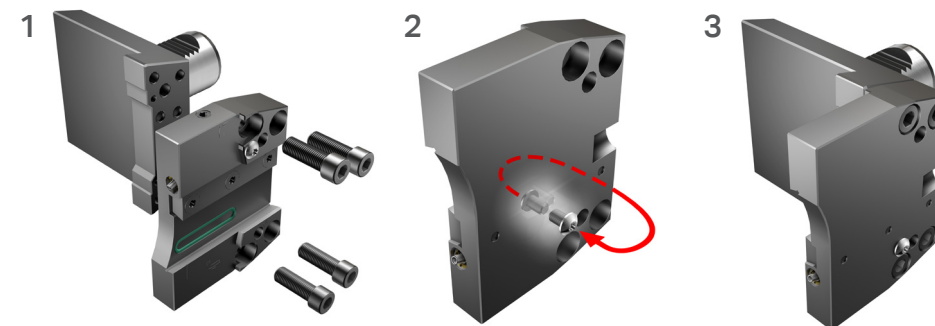
## キャリアプレート取付け方向の変更方法

正面タイプ



1. 本のスクリューを外し、キャリアプレートを取り外します
2. 偏芯ピンの位置を入れ替えます
3. キャリアプレートを反対方向に取り付け、スクリューで固定します

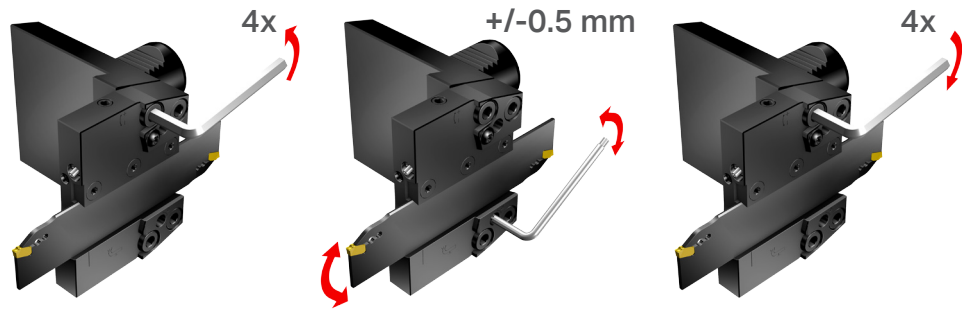
側面タイプ



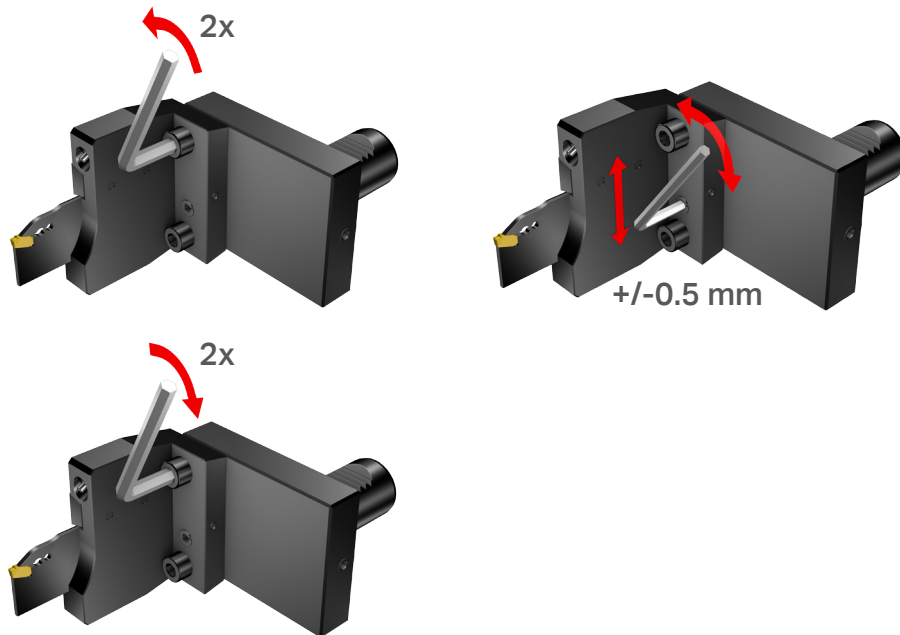
1. 4本のスクリューを外しキャリアプレートを外します。
2. 丸頭ねじの位置を キャリアプレートの反対側に変えて、クーラント接続用の穴を塞ぎます
3. キャリアプレートを反対方向に取付け、スクリューで固定します

# 芯高の調整

側面タイプ

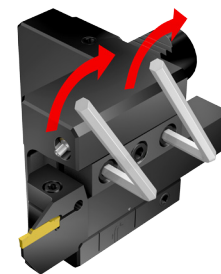
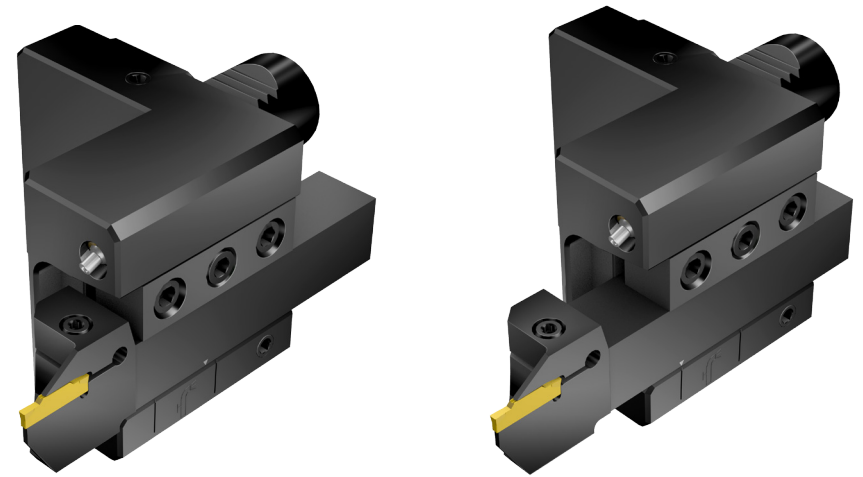


正面タイプ

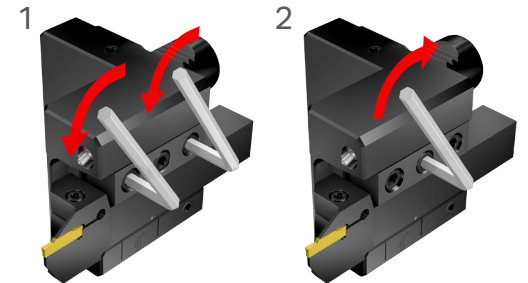


# 取扱要領

ASHR/L-\*



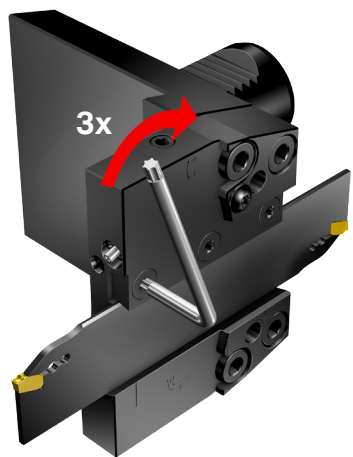
シャンクバイトのクランプ



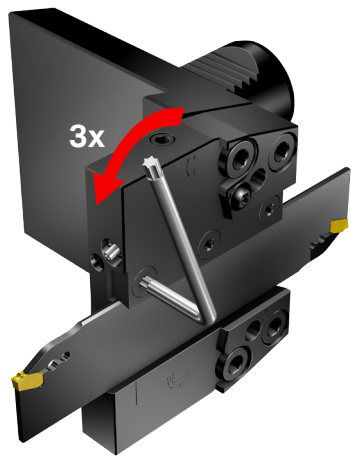
シャンクバイトのアンクランプ

# Instruções de manuseio

APBR/L-\*

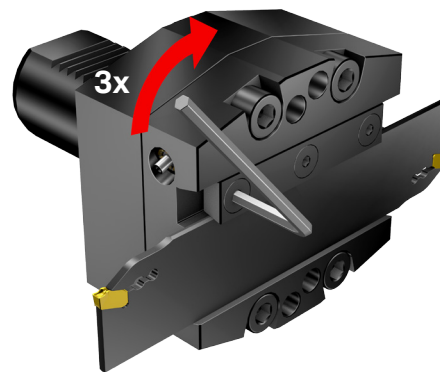


Fixe a lâmina de corte

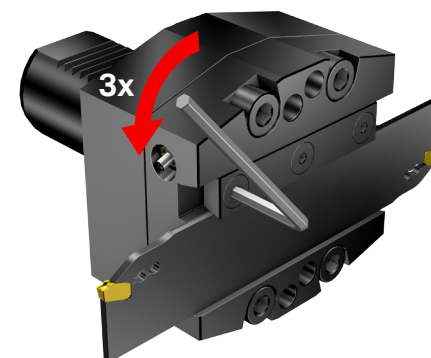


Solte a lâmina de corte

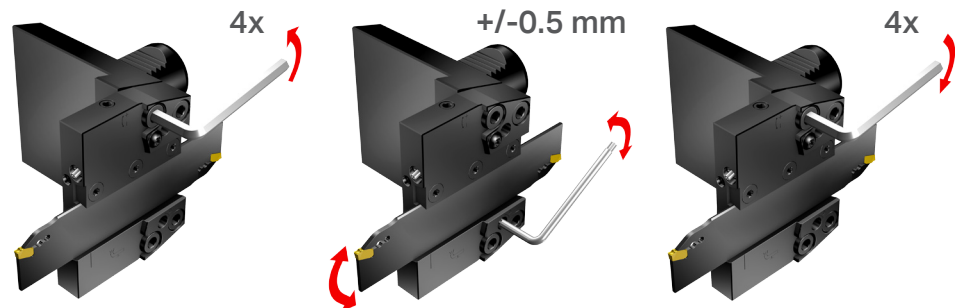
APBA-\*



Fixe a lâmina



Solte a lâmina



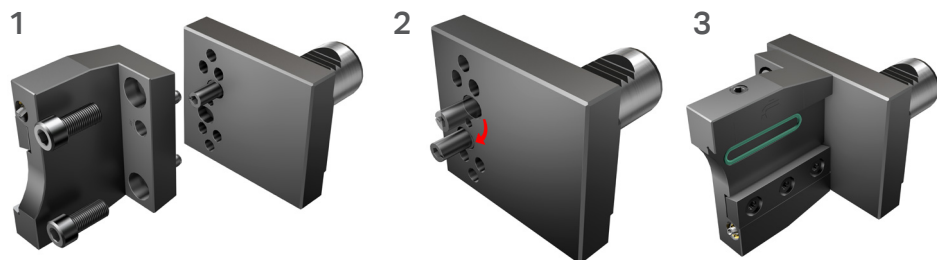
Ajuste da altura de centro



Ajuste da altura de centro

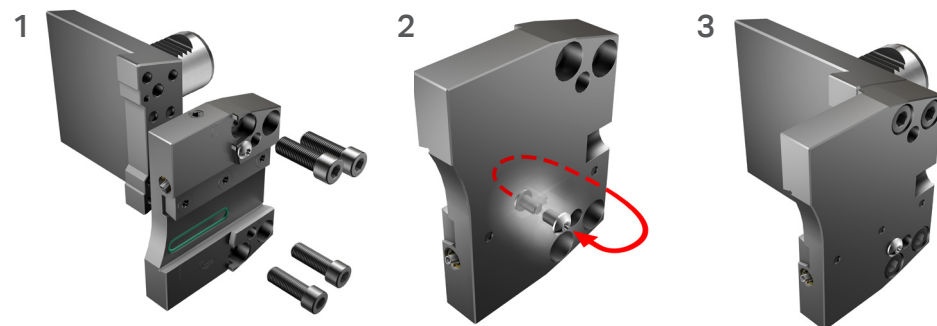
## Como alterar a orientação da placa

Placa de transporte montada na parte superior -  
válida para porta-ferramentas VDI e com fixação por parafuso



1. Remova os parafusos e a placa de transporte
2. Altere a posição excêntrica
3. Monte a placa de transporte na nova direção e aperte os parafusos

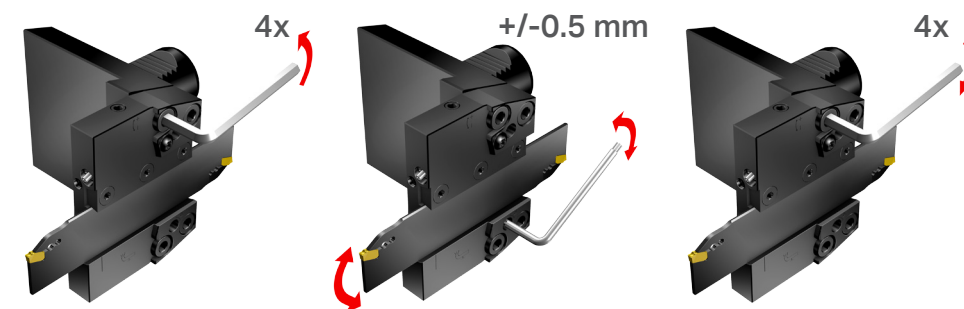
Placa de transporte de montagem frontal -  
válida para porta-ferramentas VDI e com fixação por parafuso



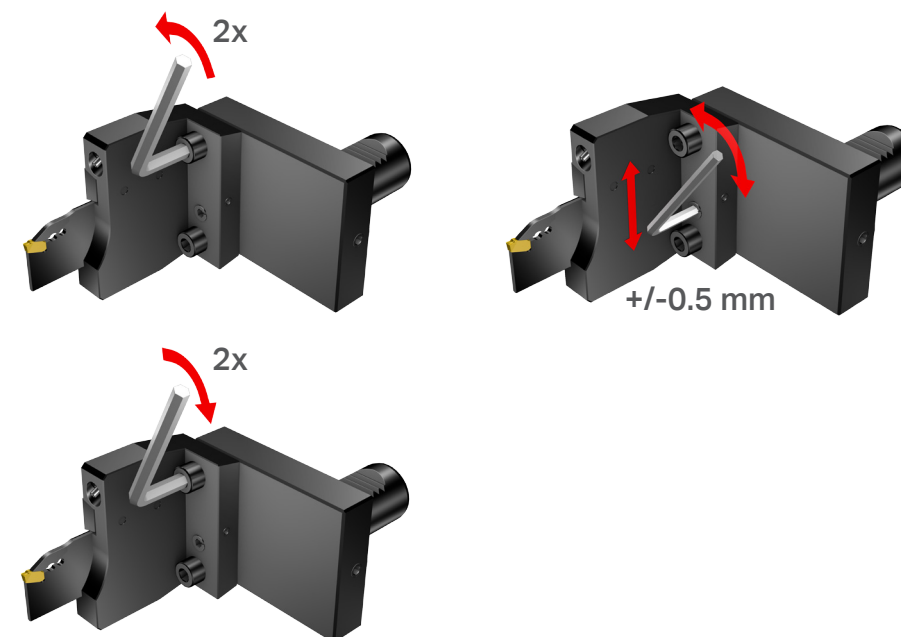
1. Remova os 4 parafusos e a placa de transporte
2. Altere a posição do parafuso da lente para o lado oposto da placa de transporte para vedar a conexão da refrigeração
3. Monte a placa de transporte na nova direção e aperte os parafusos

## Ajuste da altura de centro

Placa de transporte de montagem frontal -  
válida para porta-ferramentas VDI e com fixação por parafuso



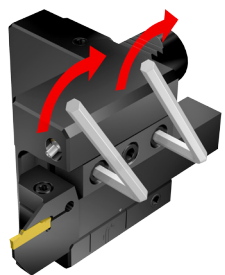
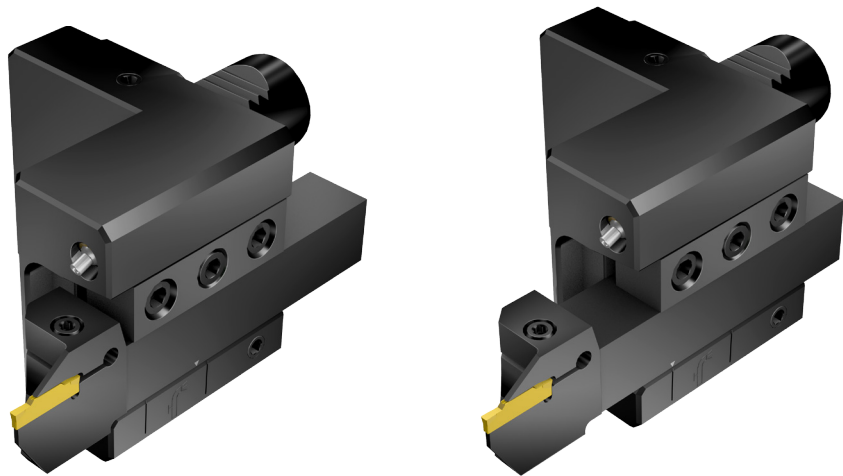
Placa de transporte de montagem superior -  
válida para porta-ferramentas VDI e com fixação por parafuso



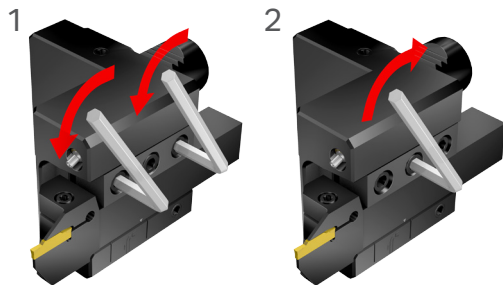


# Instruções de manuseio

ASHR/L-\*



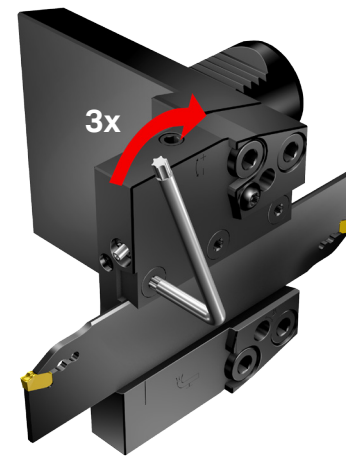
Fixe a ferramenta convencional



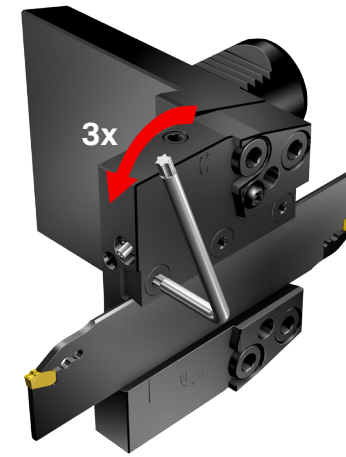
Solte a ferramenta convencional

# Инструкция по эксплуатации

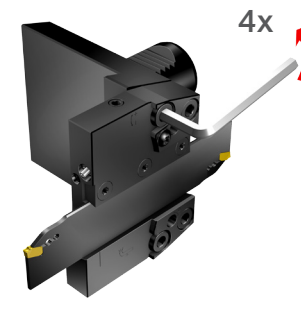
APBR/L-\*



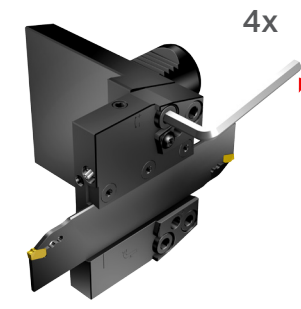
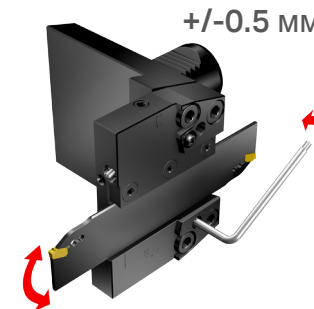
Зажмите отрезное лезвие



Освободите отрезное лезвие

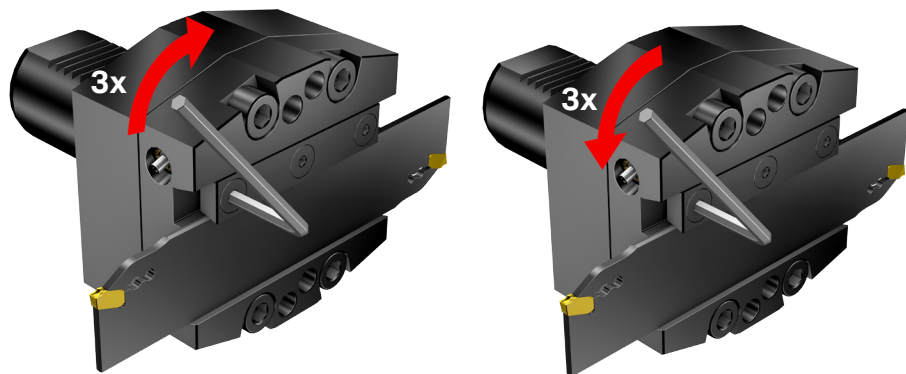


Регулировка высоты оси центров



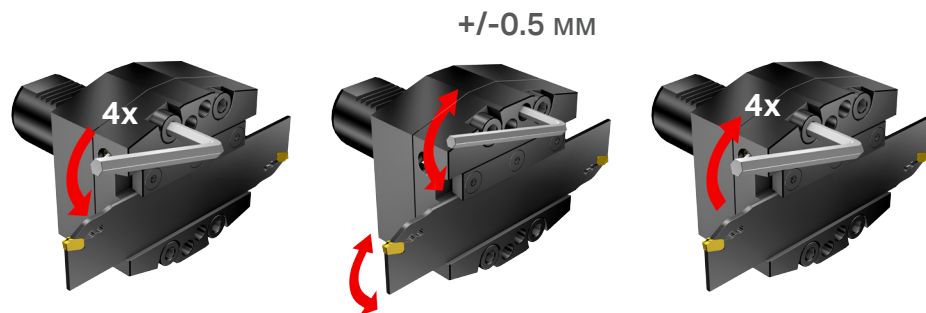


APBA-\*



Зажмите лезвие

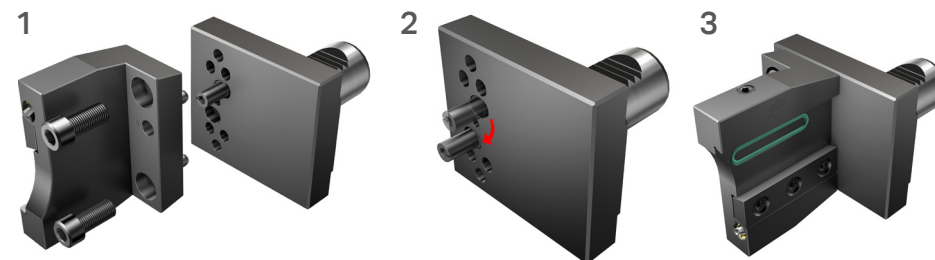
Освободите лезвие



Регулировка высоты оси центров

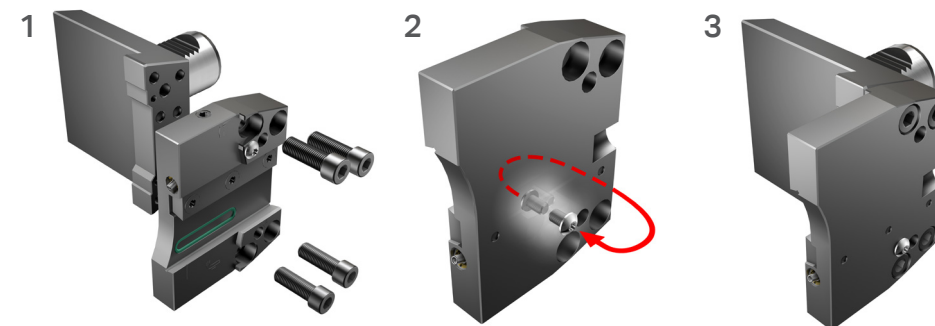
## Как изменить положение несущей пластины

Угловая несущая пластина –  
для блоков VDI и блоков с креплением болтами



1. Удалите винты и несущую пластину
2. Измените положение эксцентрика
3. Установите несущую пластину в новом направлении и затяните винты

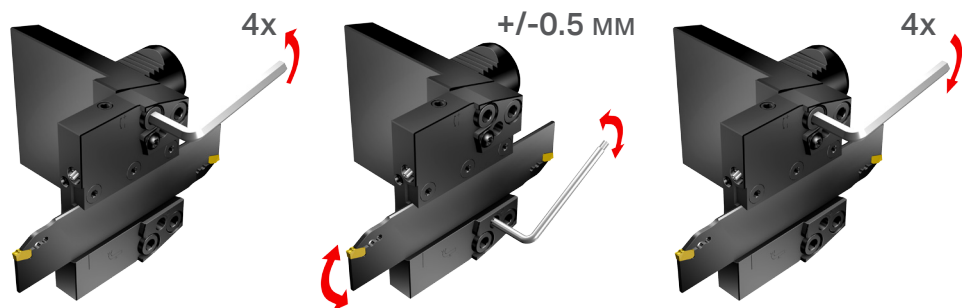
Торцевая несущая пластина –  
для блоков VDI и блоков с креплением болтами



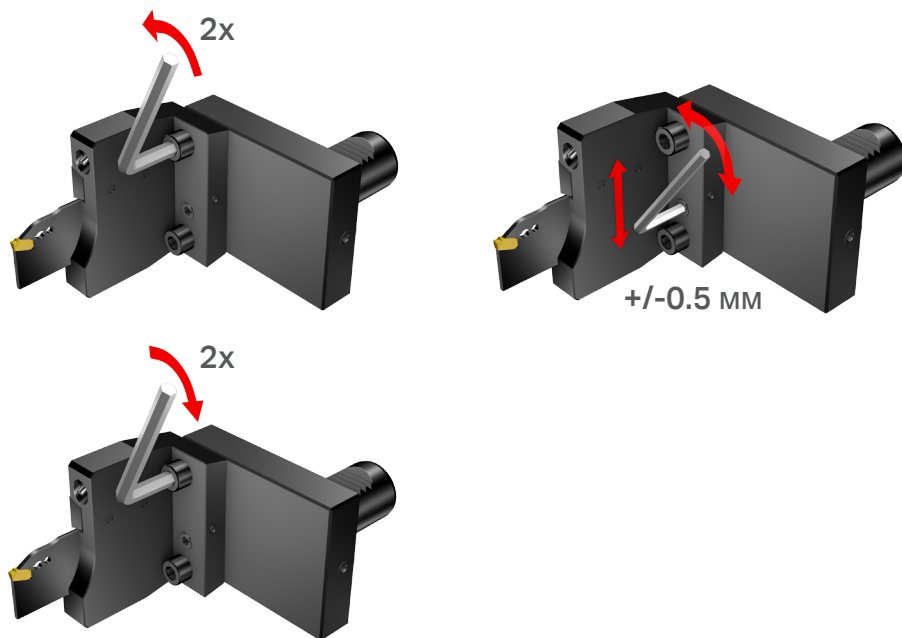
1. Удалите 4 винта и несущую пластину
2. Установите винт со сферической головкой на противоположную сторону несущей пластины для герметизации соединения для подвода СОЖ
3. Установите несущую пластину в новом направлении и затяните винты

## Регулировка высоты оси центров

Угловая несущая пластина –  
для блоков VDI и блоков с креплением болтами

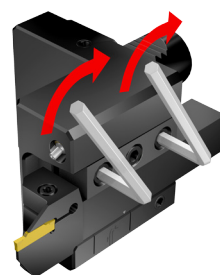
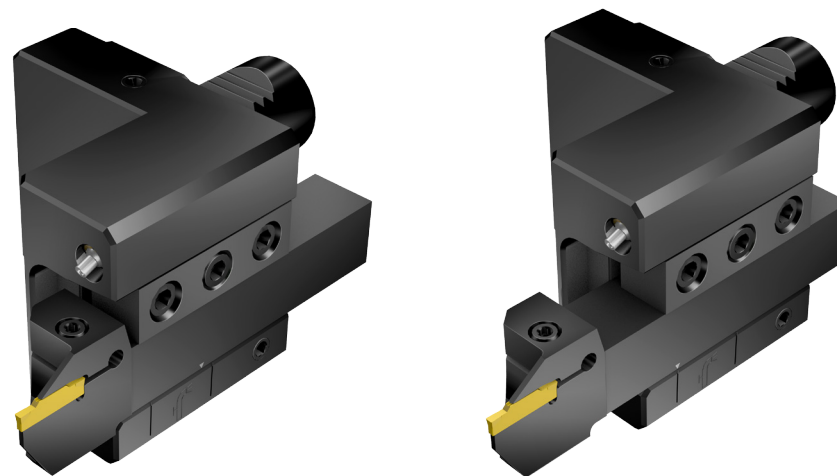


Осевая несущая пластина –  
для блоков VDI и блоков с креплением болтами

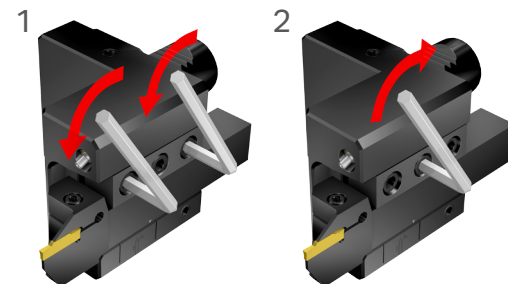


## Инструкция по эксплуатации

ASHR/L-\*



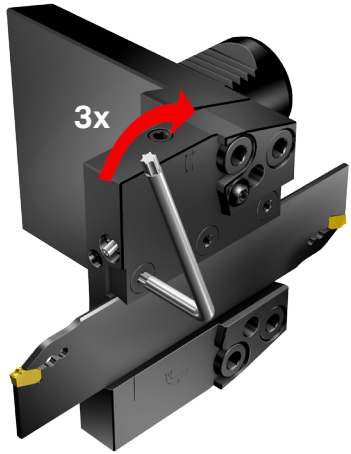
Зажмите державку



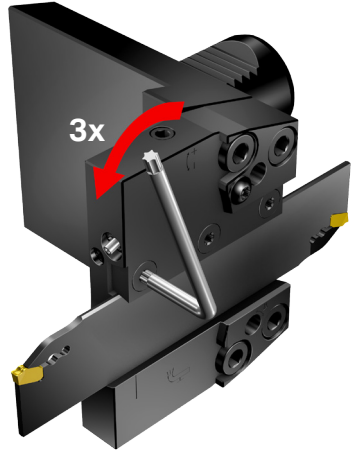
Освободите державку

# Instrucciones de uso

APBR/L-\*

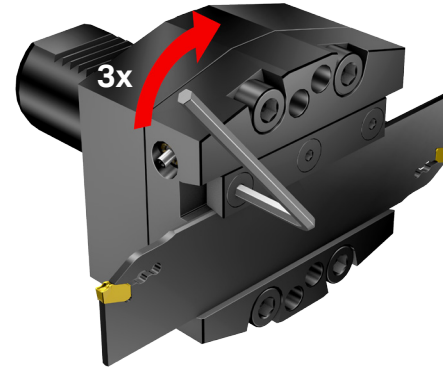


Fijar la lama de tronzar

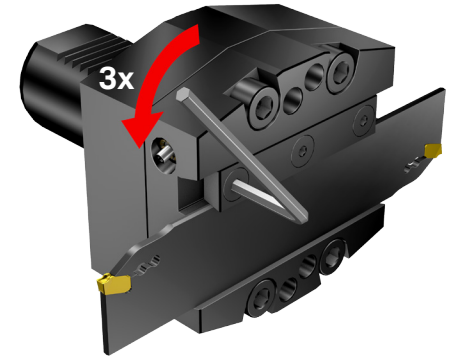


Soltar la lama de tronzar

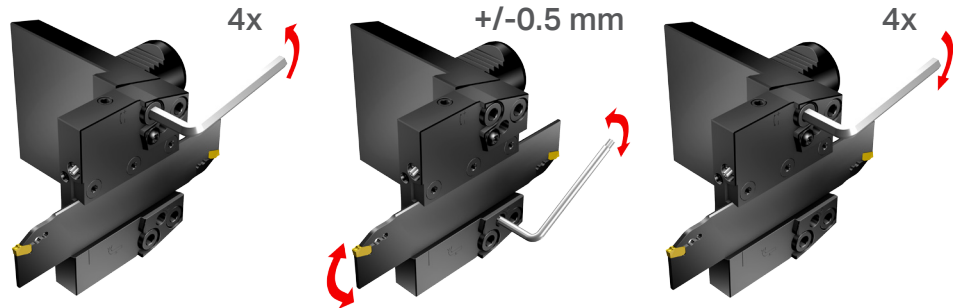
APBA-\*



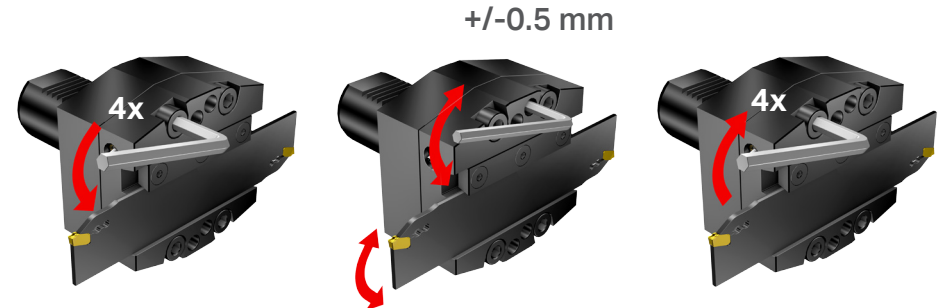
Fijar la lama



Soltar la lama



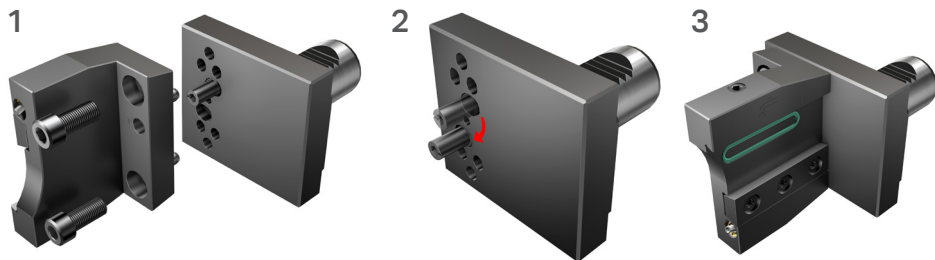
Ajuste de la línea central



Ajuste de la línea central

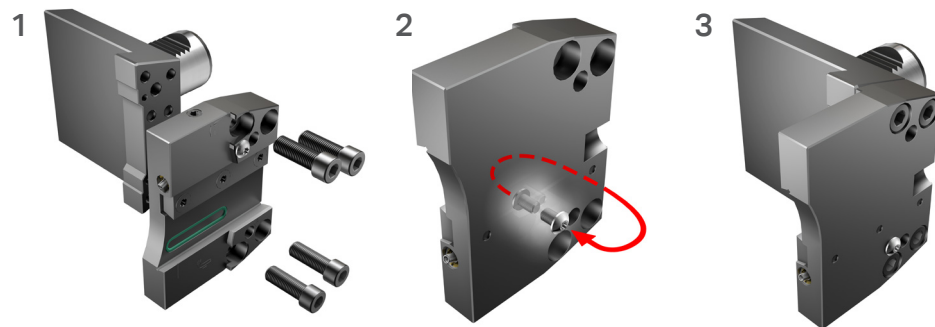
## Cómo cambiar el sentido de la placa

Placa soporte en montaje superior -  
válido para portaherramientas VDI y con perno



1. Retire ambos tornillos y la placa soporte
2. Cambie la posición excéntrica
3. Monte la placa soporte en la nueva dirección y apriete los tornillos

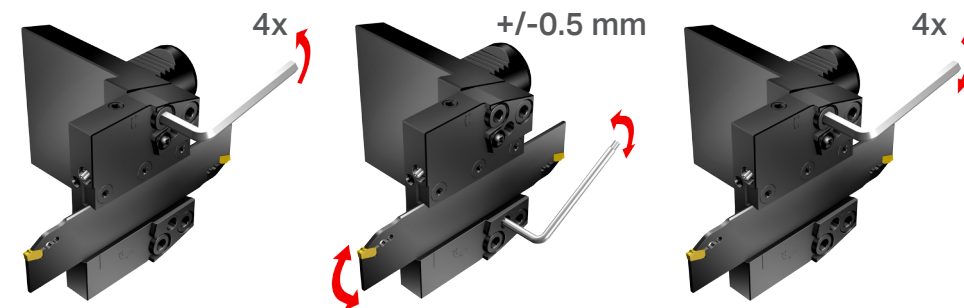
Placa soporte en montaje frontal -  
válido para portaherramientas VDI y con perno



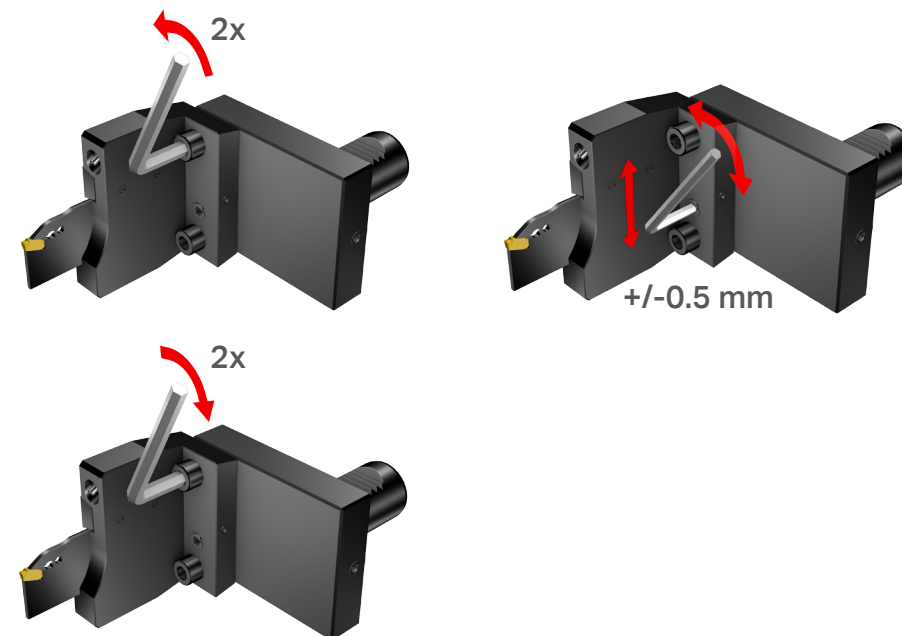
1. Retire los 4 tornillos y la placa soporte
2. Cambie la posición del tornillo de cabeza redonda al lado opuesto de la placa soporte para sellar la conexión de refrigerante
3. Monte la placa soporte en la nueva dirección y apriete los tornillos

## Ajuste de la línea central

Placa soporte en montaje frontal -  
válido para portaherramientas VDI y con perno



Placa soporte en montaje superior -  
válido para portaherramientas VDI y con perno









Head office:  
AB Sandvik Coromant  
SE-811 81 Sandviken, Sweden  
[www.sandvik.coromant.com](http://www.sandvik.coromant.com)  
E-mail: [info.coromant@sandvik.com](mailto:info.coromant@sandvik.com)

**92037**

© AB Sandvik Coromant 2015.10.01

